

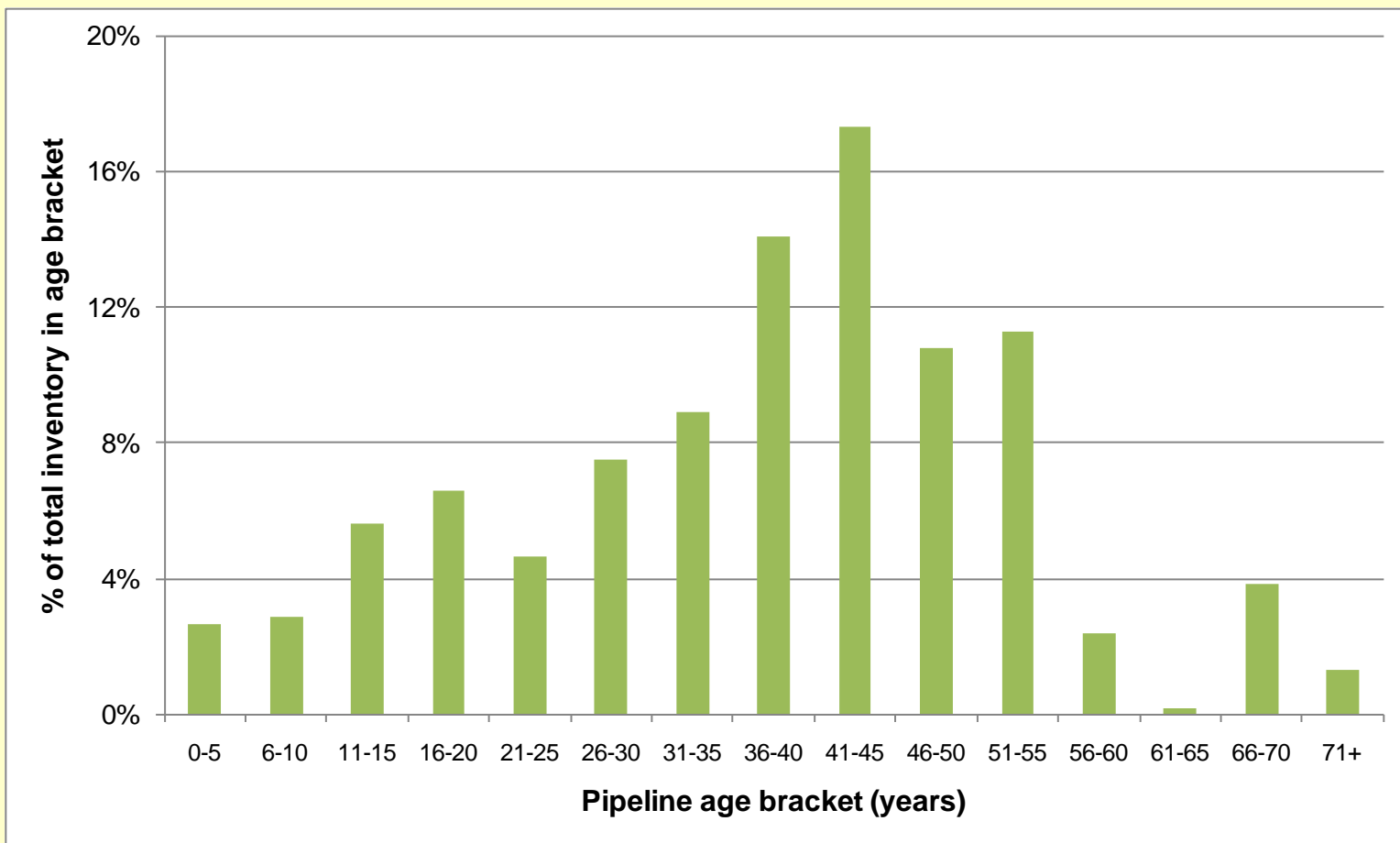
Ageing: what do the statistics tell us?

*Jean-François Larivé
on behalf of CONCAWE*

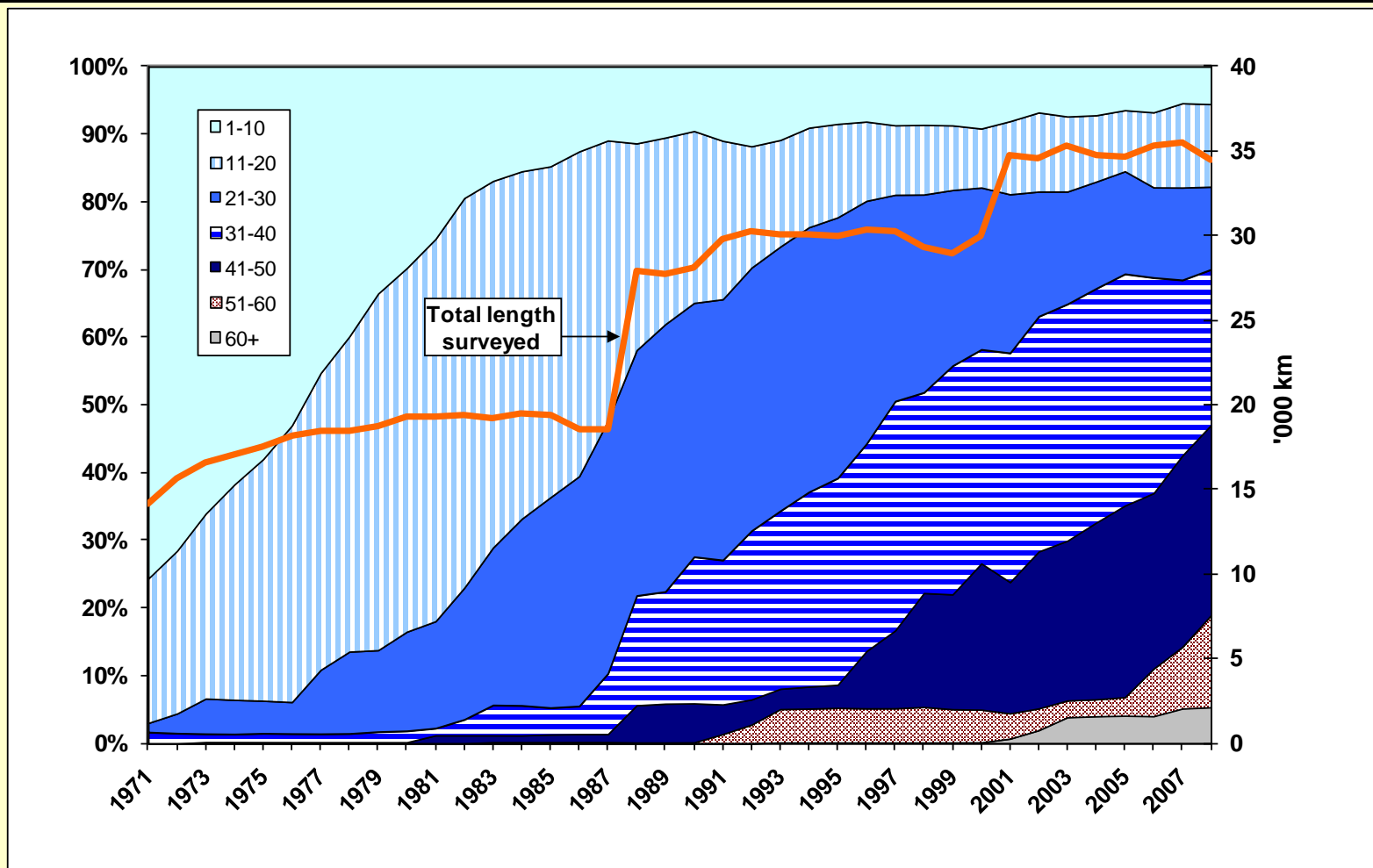
concauwe

The “CONCAWE” network is “mature”

■ Age distribution (2008)

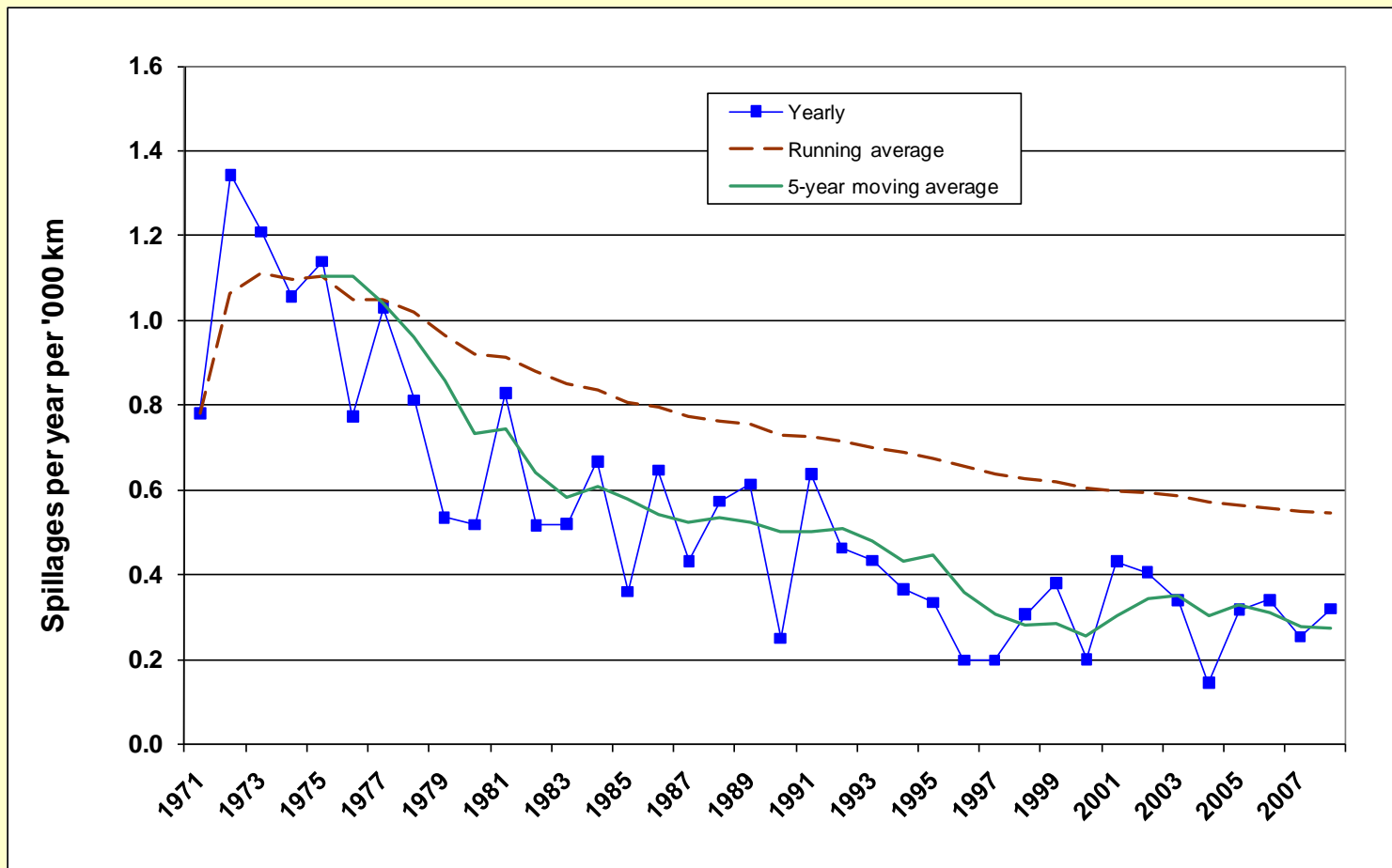


How did we get there?



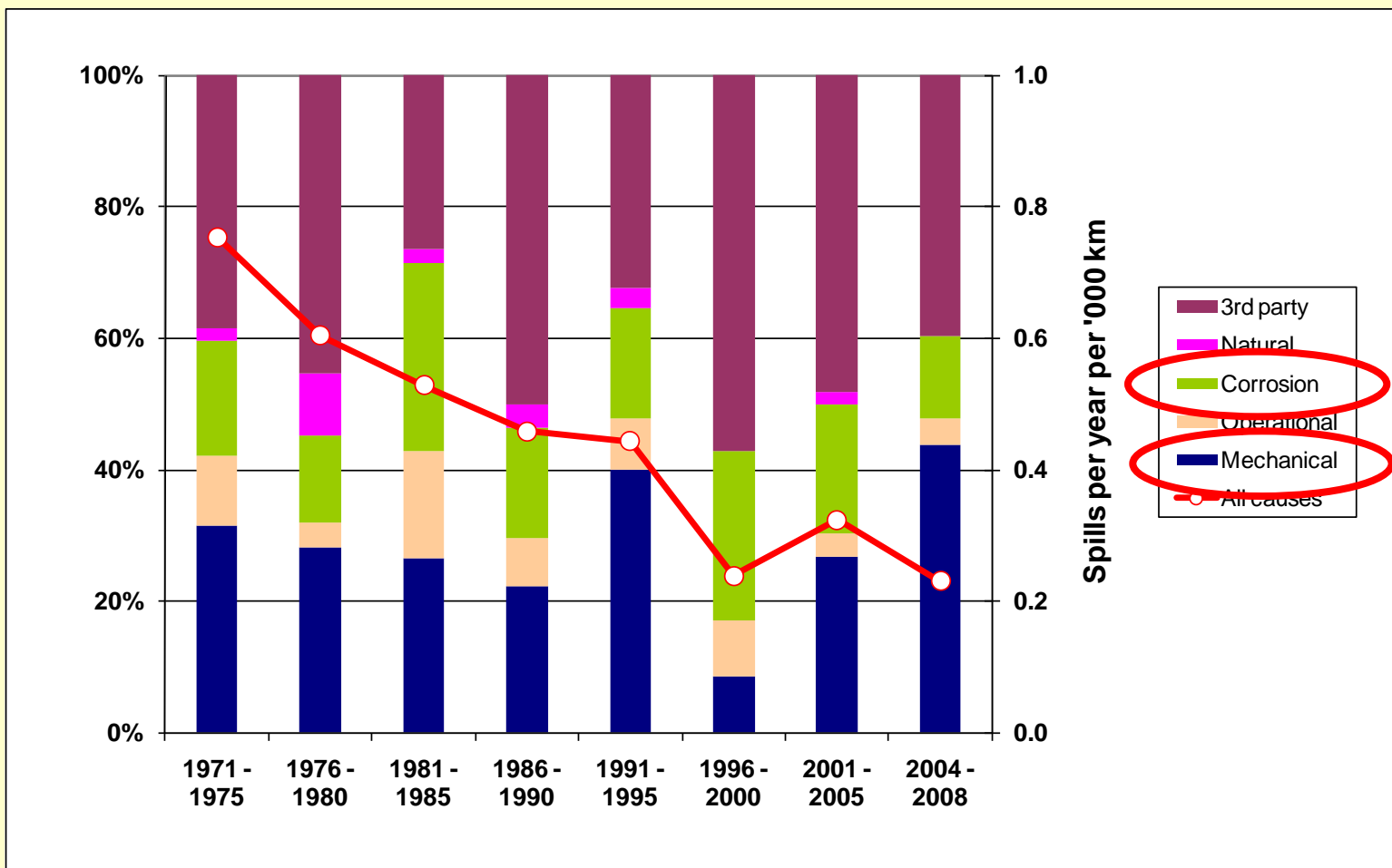
- 80% of the network is over 20 years old
- 50% is over 40 years old

Spillage incidents?



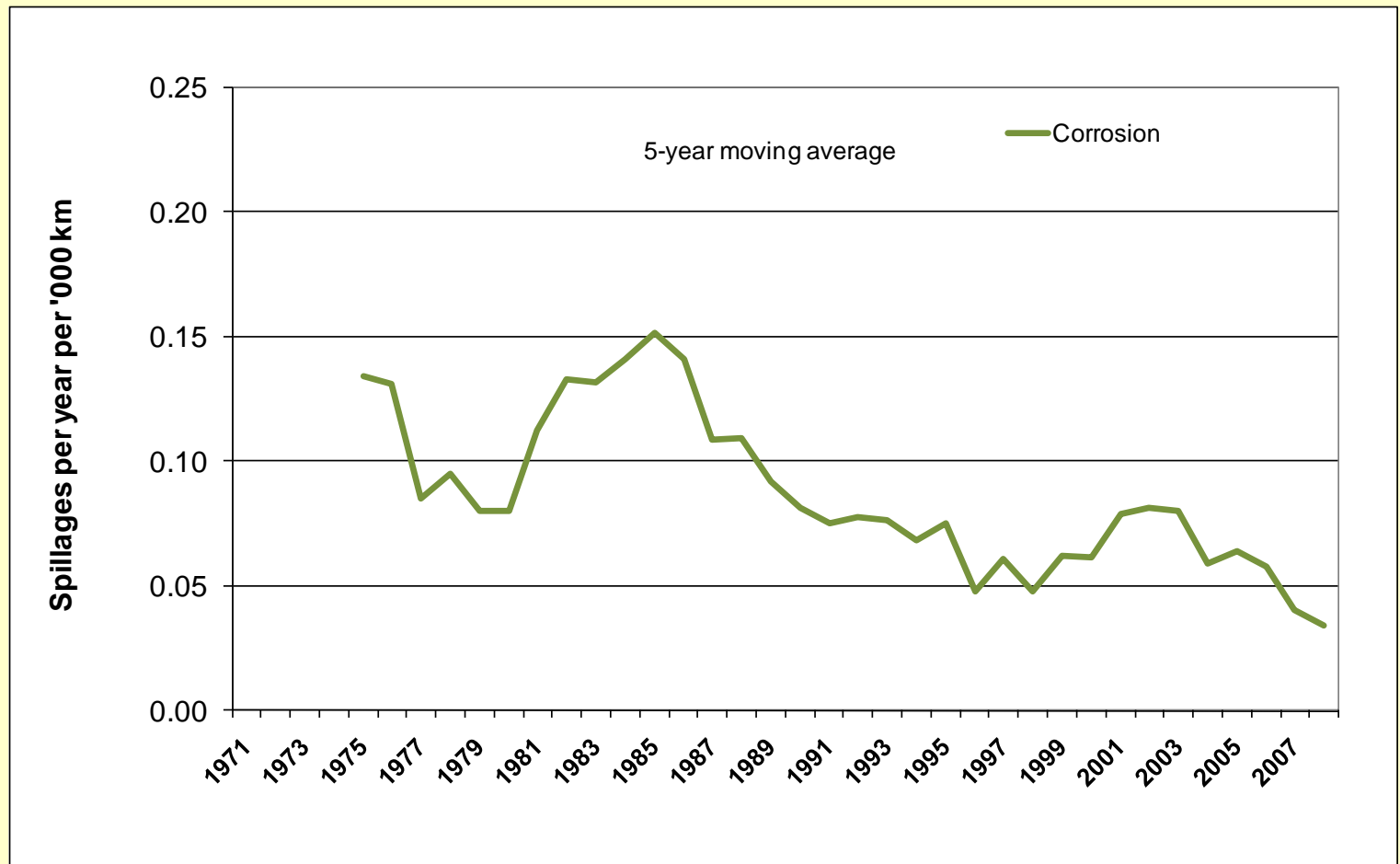
■ The frequency of spillage incidents is still on a downwards trend

Causes of spills in cold pipelines over time



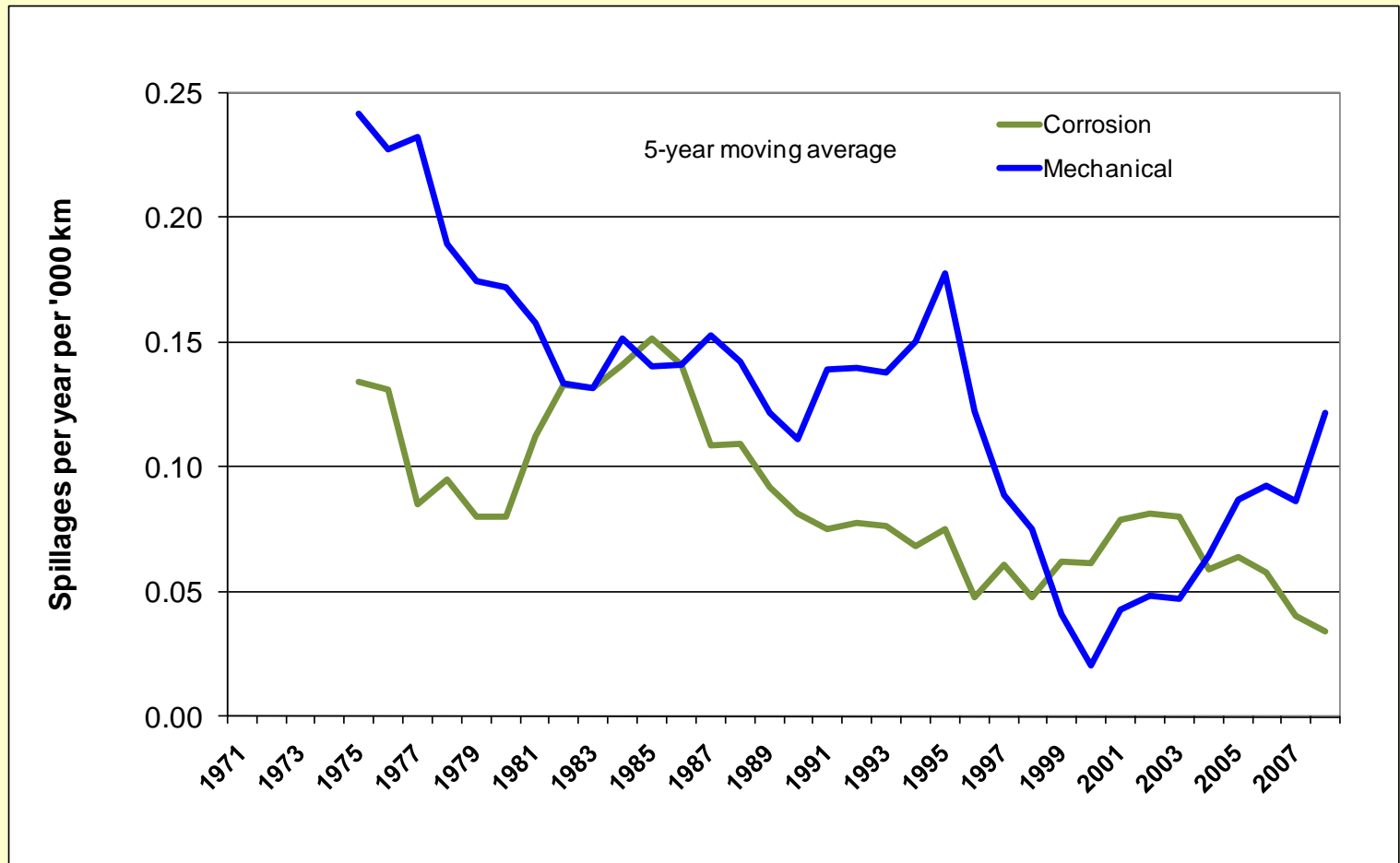
■ Mechanical and corrosion-related failures are the most likely to be linked to ageing

Corrosion



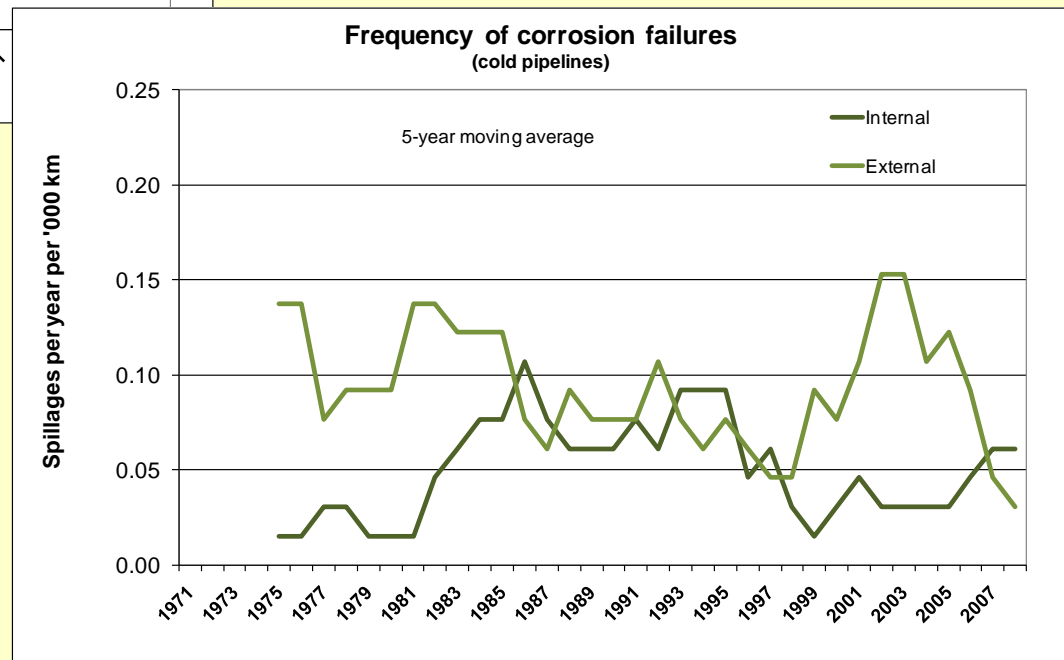
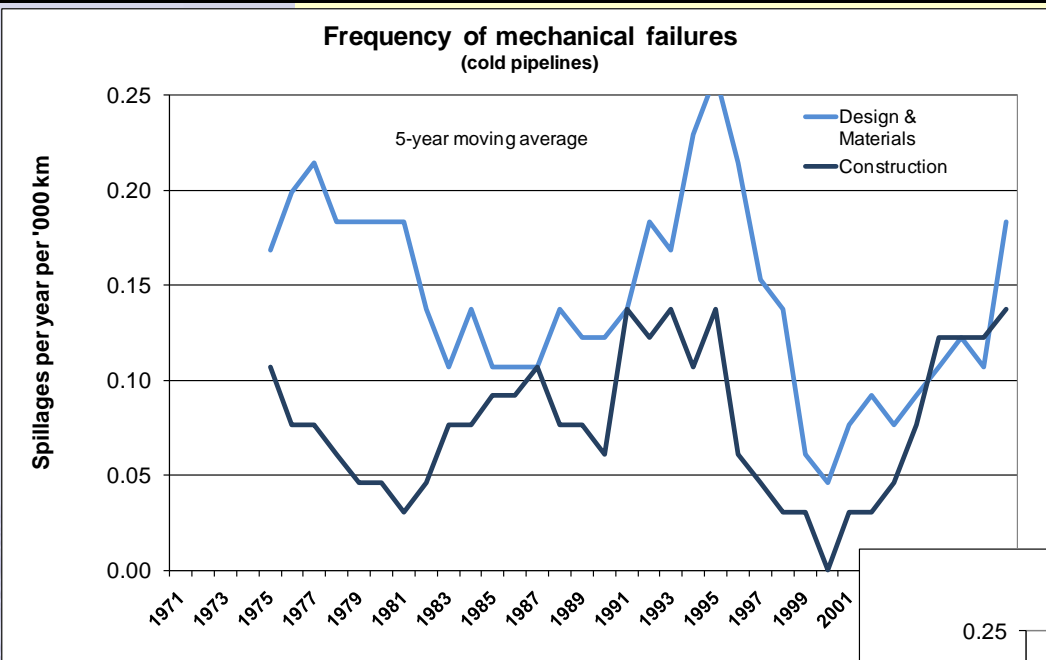
- The frequency of corrosion-related spills has not increased over the years

Mechanical

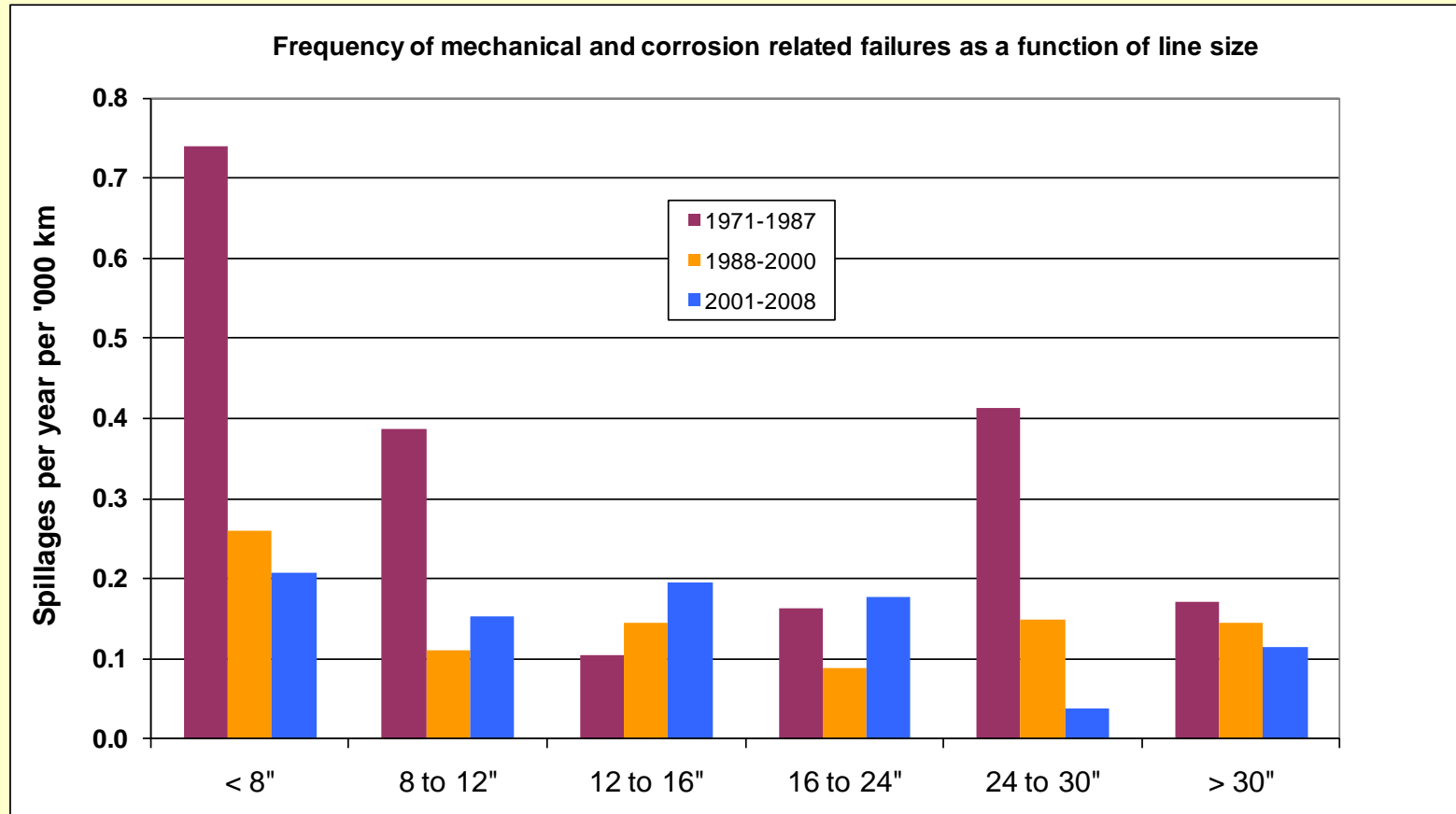


- The frequency of mechanical failures appears to be on the increase since the beginning of the last decade after years of declining trend

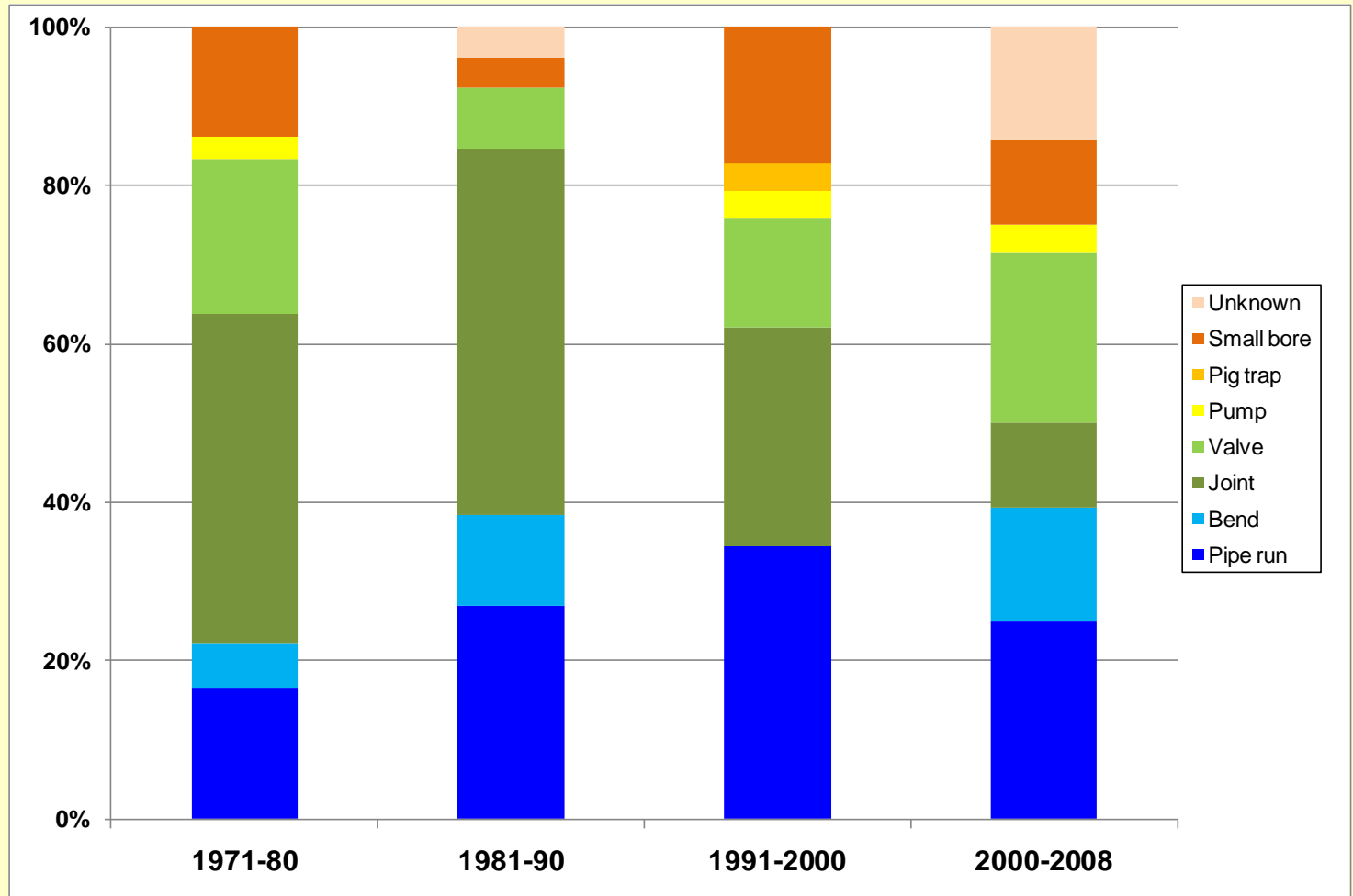
Digging deeper does not provide additional clues



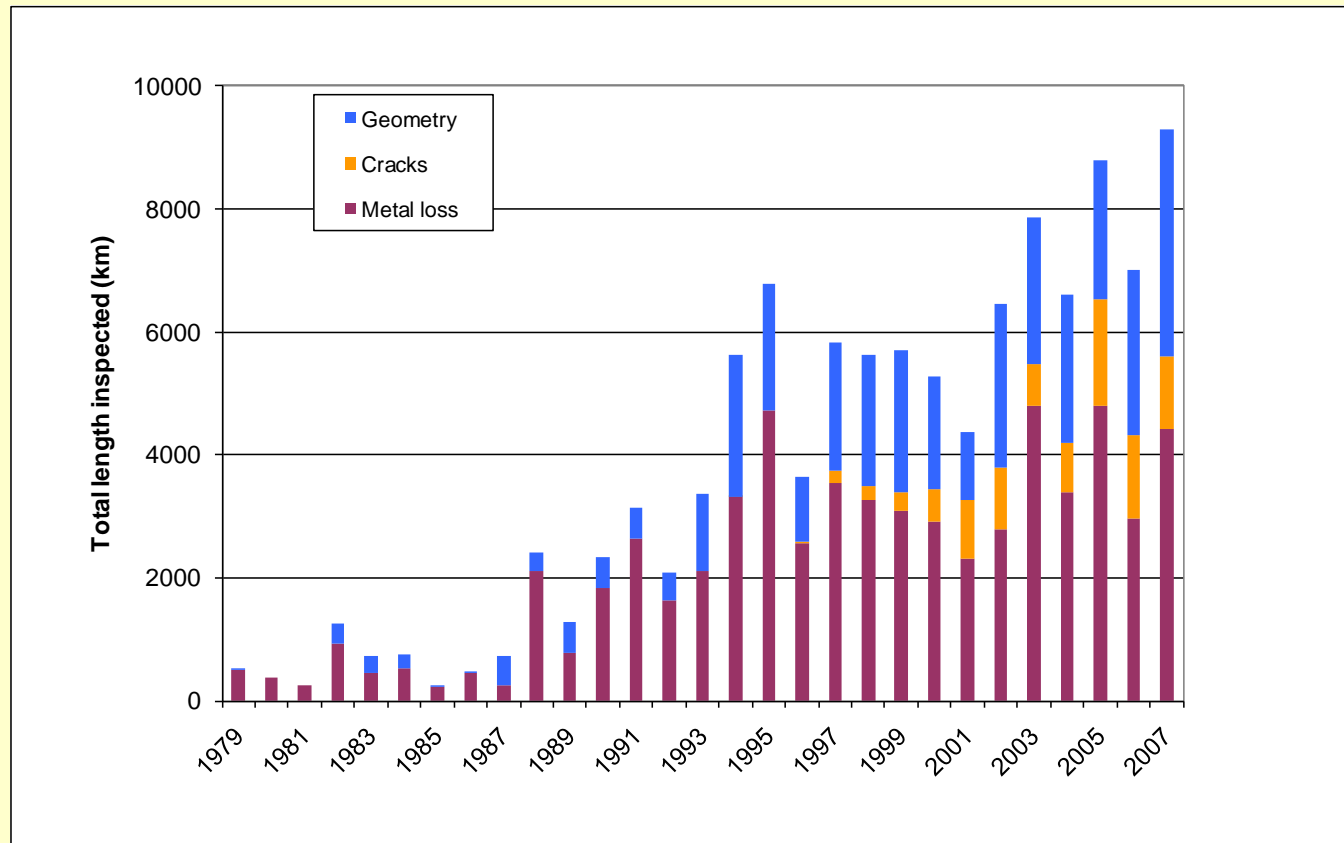
Pipeline size?



Failed equipment?



Intelligence pig inspections



- Improved integrity management including the development of intelligence pigs has contributed to the control of ageing
- 75% of the inventory has been internally inspected at least once

A faded background image of an industrial facility, likely a refinery or chemical plant, featuring several tall distillation columns and a complex network of pipes and walkways. The scene is captured from an elevated perspective, showing the intricate layout of the plant.

Thank you for your attention

concaawe